

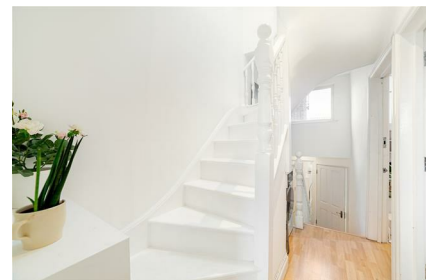
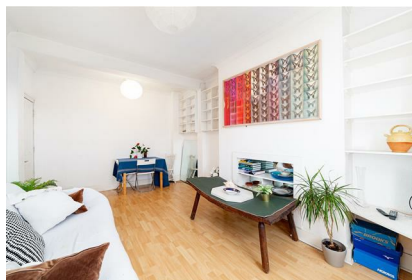
# Parkheath

*Sold on Service*

---

**Pember Road NW10**

**£3,200 PCM (£738 per week) - Brent Band C**



Duplex apartment over top two floors of a period building

Two bathrooms, including en suite to principal bedroom

Principal bedroom on top floor with panoramic rooftop views

Close to Kensal Rise, Kensal Green, Queen's Park amenities and transport

Quiet, part-pedestrianised street

Three bedrooms, third ideal as office, child's bedroom, or dining room

Wood flooring throughout and bright, flexible living spaces

Ample built-in storage: wardrobes, shelves, and eaves space

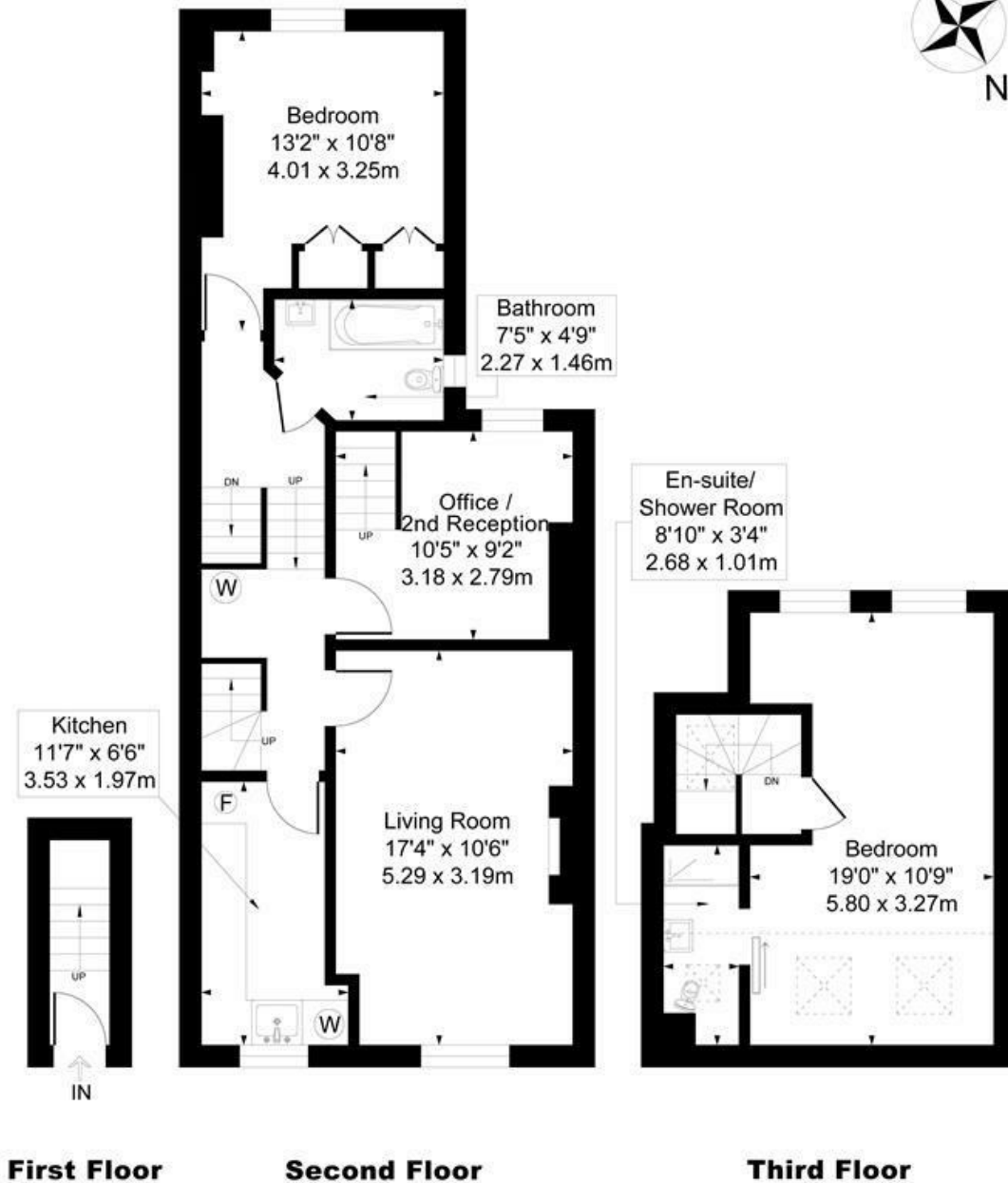
Walking distance to Ladbroke Grove, Notting Hill, shops and restaurants

EPC: Rating C, Council Tax: Brent band C

Kensal Rise Office 0208 960 4845

# Pember Road

Approximate Gross Internal Area = 84 sq m / 904 sq ft



Measured in accordance with RICS guidelines. Every attempt is made to ensure accuracy  
 However all measurements are approximate.  
 The Floor plan is illustrative purposes Only and is not to scale  
 ELLIE CLAIRE PHOTOGRAPHY LTD

The particulars do not constitute part of an offer or contract. The particulars, including text, photographs and plans, are for the guidance only of prospective purchasers/tenants and must not be relied upon as statements of fact. The descriptions provided therein represent the opinion of the author and whilst given in good faith should not be construed as statements of fact. Nothing in these particulars shall be deemed a statement that the property is in good condition or otherwise or that any services or facilities are in good working order. All measurements are approximate